



THE RESIDENCES

AT RIVERMARK

History Loves Company

LIFESTYLE

WHERE EVERYTHING COMES TOGETHER

Make your home at an address whose location and luxury allow for seamless transitions between your home life, work, and personal leisure time – with stunning Mississippi River and City views. You'll truly have everything you need, enjoying high-end amenities and convenient access to all the excitement of Baton Rouge.

PART OF THE MOVEMENT

Already recognized as a local icon, these towers are unlike anything else in Baton Rouge. Perfectly positioned around a vibrant downtown district, the Residences at Rivermark are the epicenter of this community revitalization.



LOCATION

A MODERN URBAN COMMUNITY

Dining, nightlife, arts and natural beauty. The exciting downtown surrounding The Residences at Rivermark offers so much within an easily walkable radius. Simply stroll out your door to do a little window shopping or check out a new art exhibit. Grab a coffee and head to a peaceful park, or meet a few friends for drinks at a popular bistro. It doesn't take long to feel right at home.



CONVENIENT ACCESS

With a location in the middle of all the action, The Residences at Rivermark are approachable from all directions. We're less than 8 miles from the Baton Rouge Metropolitan Airport, and have direct access to Interstate 110. Whether you're coming back at the end of a busy day or heading out for some fun, the city is always right at your fingertips.

AMENITIES

OUTSIDE IN

The Residences at Rivermark were designed with a strong focus on communal spaces, so you don't have to wander from the comfortable confines of our internal community. The wide array of luxury amenities reinforce this one-of-a-kind lifestyle while helping to provide added convenience and fostering a strong sense of connection among residents.

- ◆ Rooftop pool
- ◆ Fire pit
- ◆ Outdoor green space
- ◆ Elegant Clubhouse for resident events and private parties
- ◆ Full-service bank and ATM
- ◆ Controlled access buildings
- ◆ Parking garage with direct elevator access
- ◆ Private residential elevators
- ◆ On-site controlled access
- ◆ Controlled access entry



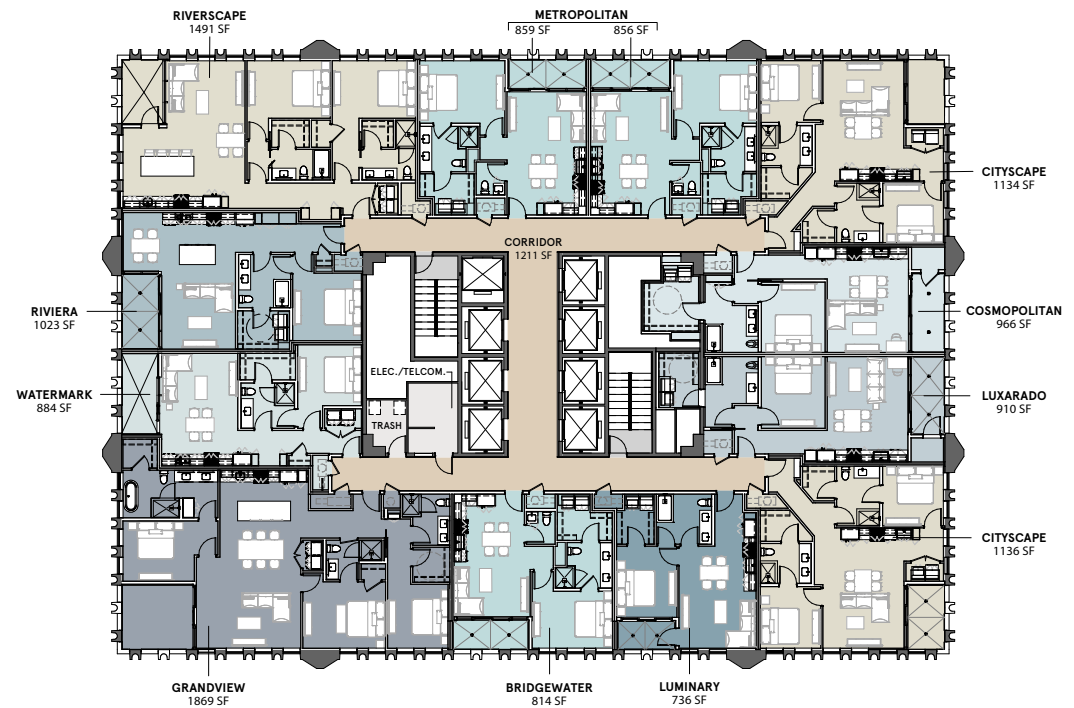
FLOORPLANS

SETTLE RIGHT IN

Spacious 1-, 2-, and 3-bedroom luxury apartments featuring custom-designed spaces with stunning Mississippi River and City views. High-end finishes and details set in an iconic building make The Residences at Rivermark a capital city landmark.

- ◆ Naturally lit, open-floor plan
- ◆ Exposed concrete ceilings
- ◆ Wood floors
- ◆ Quartz countertops
- ◆ Stainless steel appliances
- ◆ Gas ranges
- ◆ Tiled backsplash
- ◆ Double bathroom vanities
- ◆ Standalone, glass wall showers
- ◆ Washer and dryer
- ◆ Private balconies
- ◆ Historic neighborhood
- ◆ Spectacular river views

Our on-site management is here not only to assist in finding the home that's best for you, but also to ensure that all your needs will be met moving forward.



Click [here](#) to view additional floorplans.



CONTACT

Contact our team today to learn more and find the home that's just right for you.

225.522.2000

451 Florida Street
Baton Rouge, LA 70801

www.RivermarkCentre.com

